

NTAS 14

PO Mooring # 1268

Position: 14 44.9 N, 50 56.9 W
WATCH CIRCLE = 4.0 N.Miles

ASIMET INFO		
MODULE	SYS 1	SYS 2
HRH		
BPR		
WIND		
PRECIP		
LWR		
SWR		

Modular Foam Buoy with (2) ASIMET Systems Plus:
ARGOS AND IRIDIUM TELEMETRY, STAND ALONE XEOS GPS
LASCAR AT/H (225) - VIASALA WXT520 (006)
SBE 39 AT (5272) - NDBC WAMDAS (6015)

(4) RBR Solo-T in hull
sn: 75556-75559

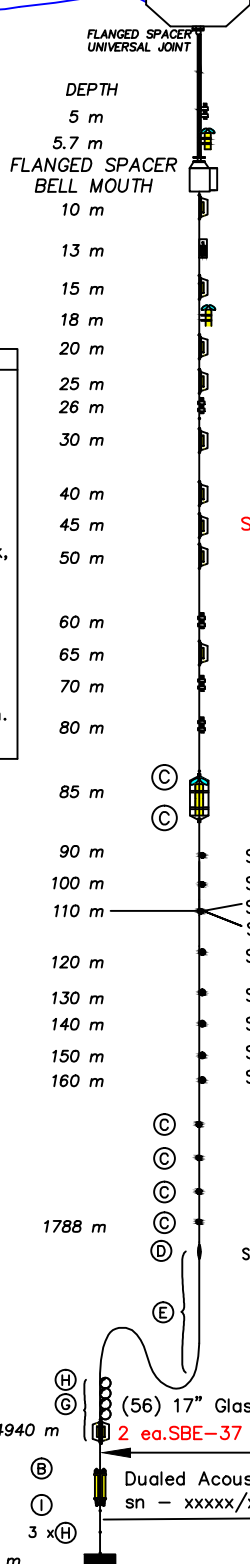
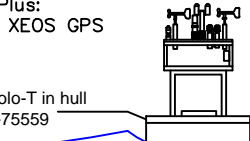
5 meter compliant section with universal and 8 conductors on coil cord for telemetry

Based on .80m water line, 5 m temp mounted 3.81 m from top of EM chain, 10 m temp 1.84m from bottom of bellmouth

HARDWARE DESIGNATION	
(B)	3/4" Chain Shackle, 7/8" EndLink, 5/8" Chain Shackle
(C)	3/4" Chain Shackle, 7/8" EndLink, 3/4" Chain Shackle
(D)	3/4" Chain Shackle, 3/4" Anchor Shackle
(E)	3/4" Anchor Shackle, 7/8" EndLink, 3/4" Anchor Shackle
(G)	5/8" Chain Shackle, 7/8" EndLink, 5/8" Chain Shackle
(H)	5/8" Chain Shackle, 7/8" EndLink, 7/8" Anchor Shackle
(I)	1-1/4" Master Link, (1) 5/8" Ch Sh. (1) 7/8" End Link, (1) 7/8" Anc Sh

NOTE: Depths for ADCP and all deeper instruments are one meter shallower than stated

HARDWARE REQUIRED (Includes approx. 20% Spares)	
(2)	1.25" Master Link
(5)	7/8" Anchor Shackles
(35)	7/8" Weldless Links
(20)	3/4" Chain Shackles
(5)	3/4" Anchor Shackles
(45)	5/8" Chain Shackles



Base with (2) Microcats (1836, 3604) - 0.7 m below surface
Backup Iridium Transmitter (ID 300034013905090)

5 M EM CHAIN

SBE-39 (539) attached to EM Chain

NORTEK ADCM (9467) attached to EM Chain

NOTE: Incorrect wire rope length

SBE-39(4465) Inductive, clamped

Nortek Current Meter (5973) - IM with vane, heads up

SBE-39 (545) clamped to wire

NORTEK ADCM (432) clamped to wire

SBE-39 (546) clamped to wire

SBE-37 (669) Inductive, clamped to wire

RBR Duo-CT (61568) clamped to wire (maybe)

SBE-39 (631) clamped to wire

SBE-39 (677) clamped to wire

SBE-37 (684) Inductive, clamped to wire

SBE-39 (678) clamped to wire

SBE-39 (680) Clamped to Wire

SBE-37 (686) Inductive, clamped to wire

SBE-39 (681) Clamped to Wire

SBE-39 (4466) Inductive, clamped to wire

78 meter 7/16" Wire Rope
Terminated with:
standard swage on bottom special IM threaded swage on top
Mark from top:
At 4 meters, mark 10 meters at 9 meters, mark 15 meters then continue every 5 meters

Top and bottom to be clearly marked.
Mark Reel for identification.
4 m mark "90 meters"
14 m mark "100 meters"
24 m mark "110 meters"
34 m mark "120 meters"
44 m mark "130 meters"
54 m mark "140 meters"
64 m mark "150 meters"
74 m mark "160 meters"

300 kHz ADCP (2125), Upward Looking
500 m 3/8" Wire
SBE-39 (684) Clamped
SBE-39 (750) Clamped
SBE-39 (3480) Clamped
Star-Oddi (3167) Clamped
Star-Oddi (3168) Clamped
Star-Oddi (3169) Clamped
Star-Oddi (3170) Clamped
Star-Oddi (3171) Clamped
Star-Oddi (3791) Clamped

500 m 3/8" Wire
500 m 3/8" Wire
200 m 3/8" Wire
100 m 3/8" Wire
200 m 7/8" Nylon
Hard eye at end. — one piece, encapsulated termination
Hard eye at top
500 m 7/8" Nylon
2000 m 3/4" Nylon
100 m 7/8" Nylon — one piece, to be spliced at sea thimbles both ends
1500 - x m 1" Colmega

4940 m (56) 17" GlassBalls on 1/2" T.C.
2 ea. SBE-37 (x, x) on 1" load bar - just below glass balls
5 m 1/2" Trawler Chain
Dualed Acoustic Release
sn - xxxxx/xxxxxx
5 m 1/2" Trawler Chain
20 m 1" Samson Nystron
5 m 1/2" Trawler Chain
Anchor Wet Wt 6000 lbs (Air Wt ~ 7,000 lbs)

Water Depth = 5000 m

NTAS 14 MOORING

V2 09/04/2014

Jeff Lord date: 09/04/2014
NTAS_14_v2.dwg